



50/55/60
——65/70/72系列轮式拖拉机
75P/80P

零件目录

(底盘部分)



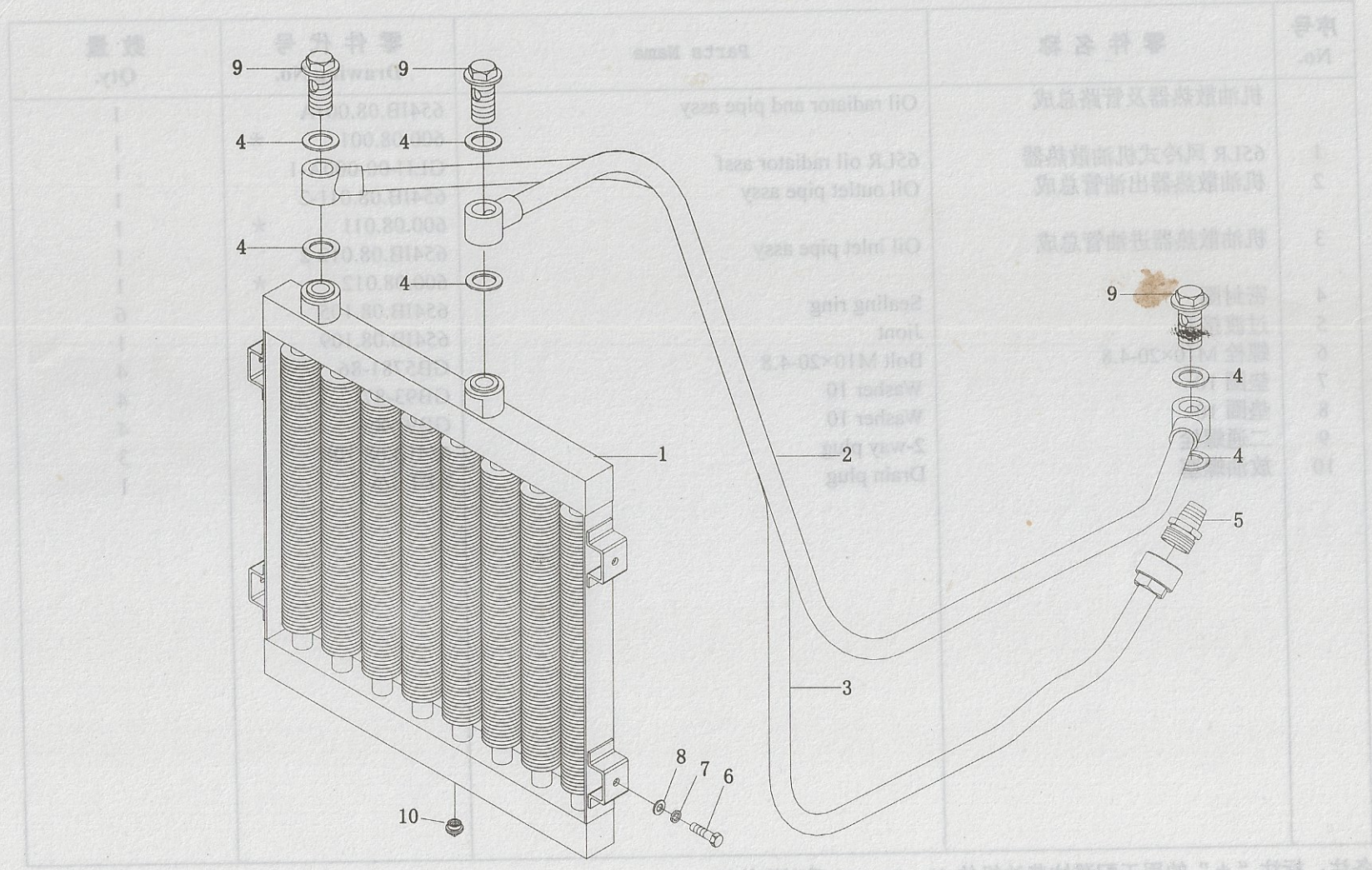
50/55/60
PARTS CATALOGUE OF JS——65/70/72
75P/80P
SERIES WHEELED TRACTORS(CHASSIS)



江苏清拖农业装备有限公司

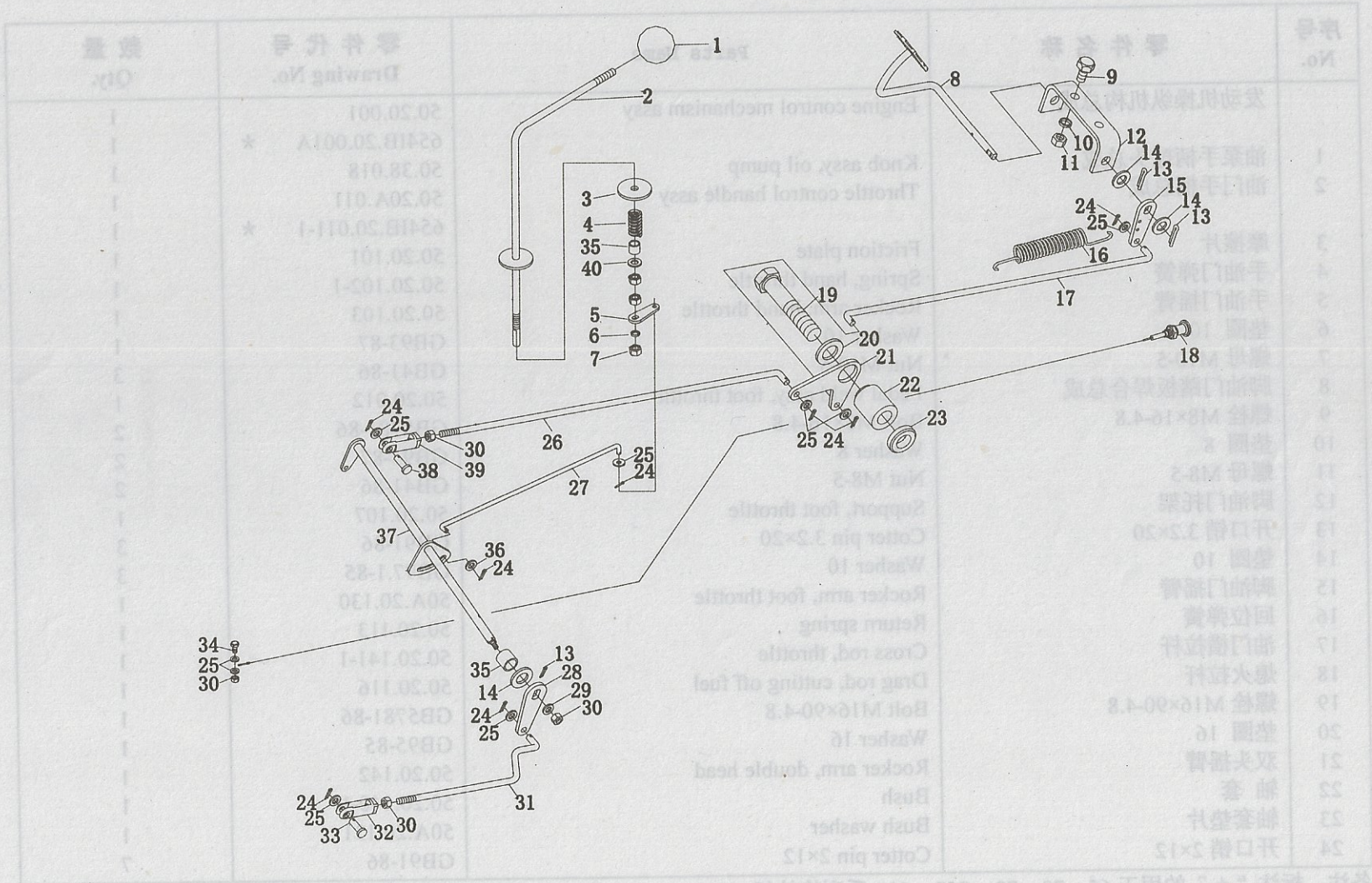
JIANGSU QINGTUO AGRICULTURE EQUIPMENT CO.,LTD

08 机油散热器及管路总成 Oil Radiator and Pipe Assy



Note: Parts with the mark "*" are used for 60, 70 and 75 series tractor with the Weifang diesel engine specially.
 备注: 标有 "*" 的用于潍柴发动机的 60、70、75 系列拖拉机。

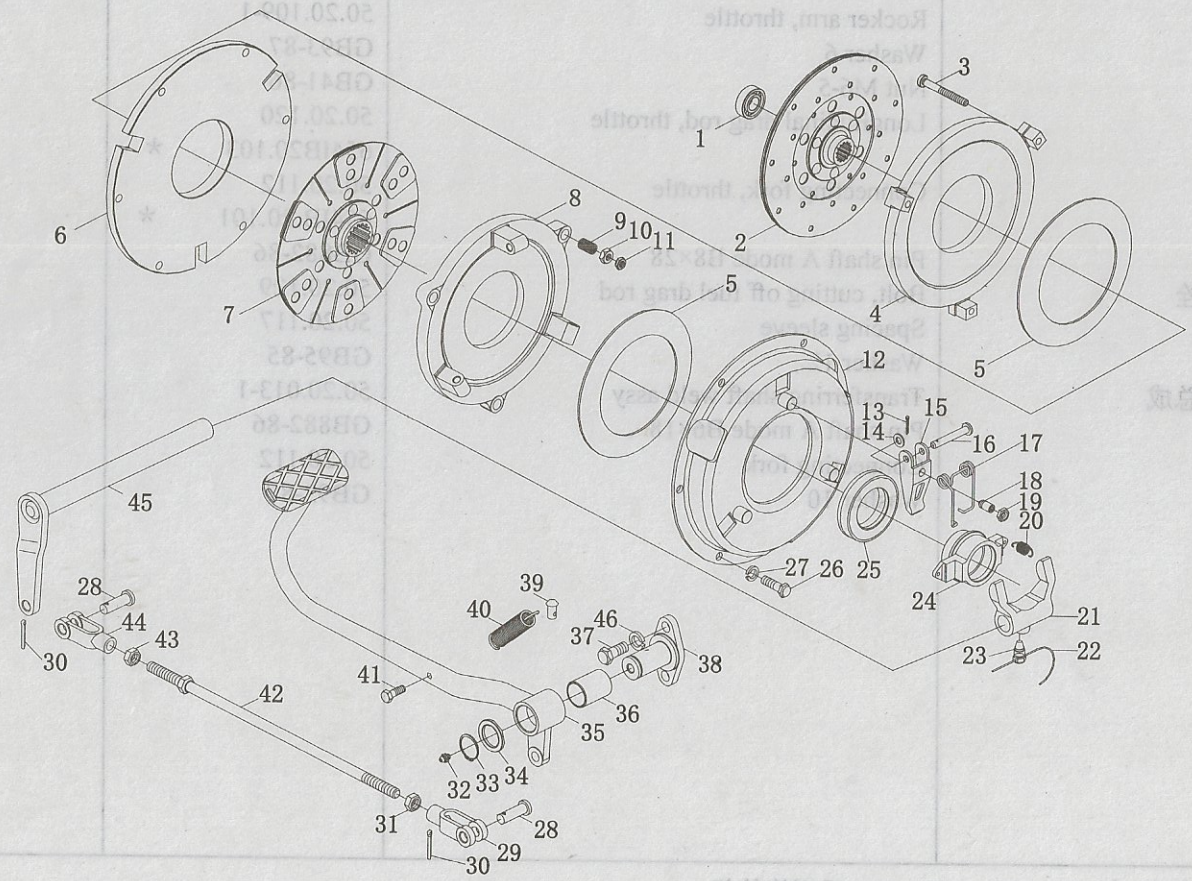
20 发动机操纵机构总成 Engine Control Mechanism Assy



备注: 标有“*”的用于 65、70、72、75P、80P 系列拖拉机。
 Note: Parts with the mark “*” are used for 65, 70, 72, 75P and 80P series tractor specially.

21 离合器总成 Clutch Assy

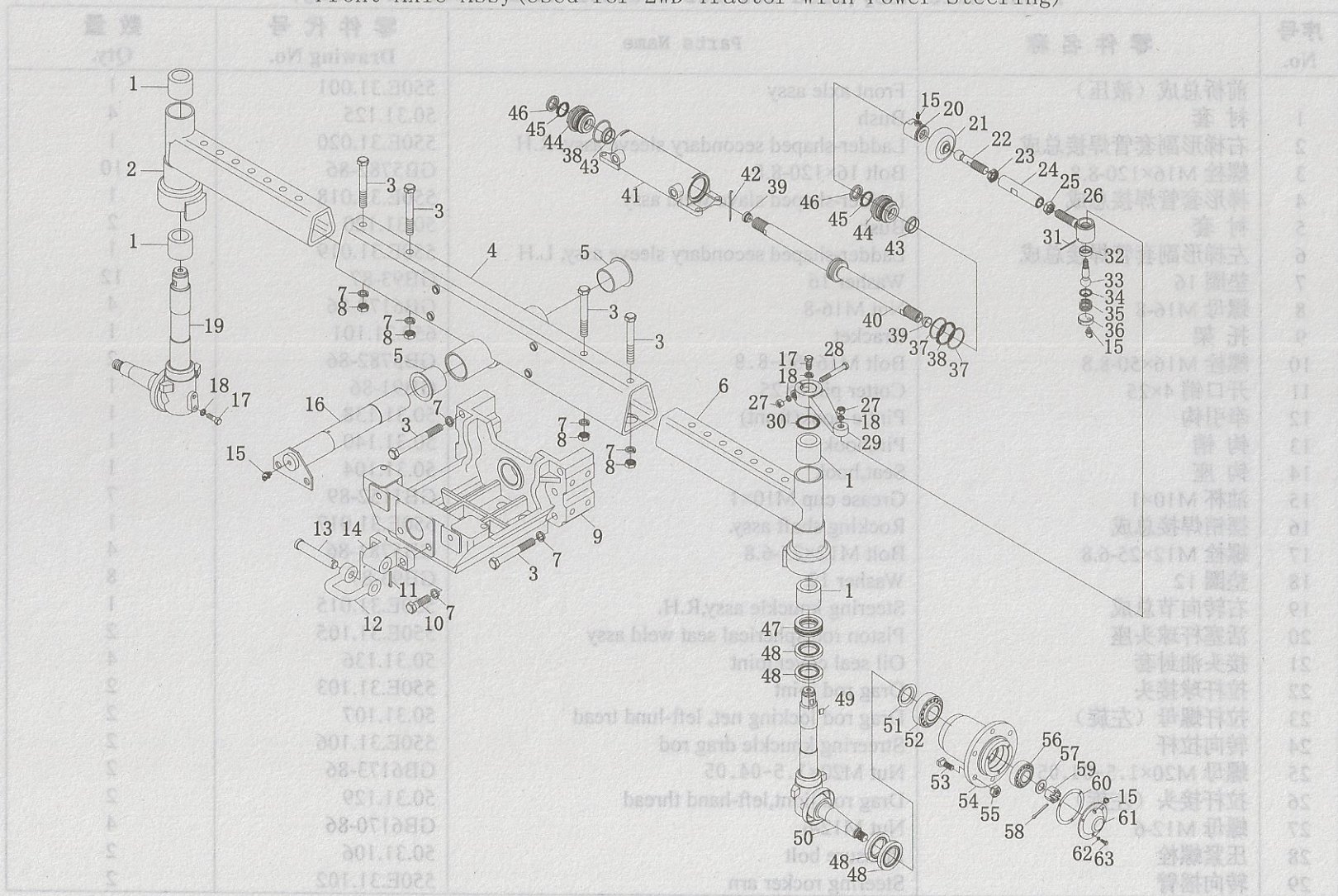
数量 Qty	零件代号 Drawing No.	21 离合器总成 Clutch Assy	零件名称	序号 No.
1	GB97.1-86	Washer 6	垫圈 6	25
1	50A.20.134-1	Diagonal weld assy	油门轴拉杆	26
1	50.20A.012	Drag rod, weld assy hand throttle	手油门拉杆总成	27
1	6241B.20.012 *	Rocker arm, throttle	油门摇臂	28
1	50.20.107	Washer 6	垫圈 6	29
4	GB41.1-70	螺母 M6-2	螺母 M6-2	30
1	50.20.10	油门轴拉杆	油门轴拉杆	31
1	6241B.20.10 *	油门连接叉	油门连接叉	32
1	50.20.107	销轴 B8×28	销轴 B8×28	33
1	6241B.20.10 *	熄火拉杆螺栓	熄火拉杆螺栓	34
1	GB92.83	螺母	螺母	35
1	50.20.107	垫圈 12	垫圈 12	36
1	GB92.83	螺母	螺母	37
1	50.20.107	传动轴总成	传动轴总成	38
1	GB92.83	销轴 B6×18	销轴 B6×18	39
1	50.20.107	连接叉	连接叉	40
1	50.20.107	垫圈 10	垫圈 10	41



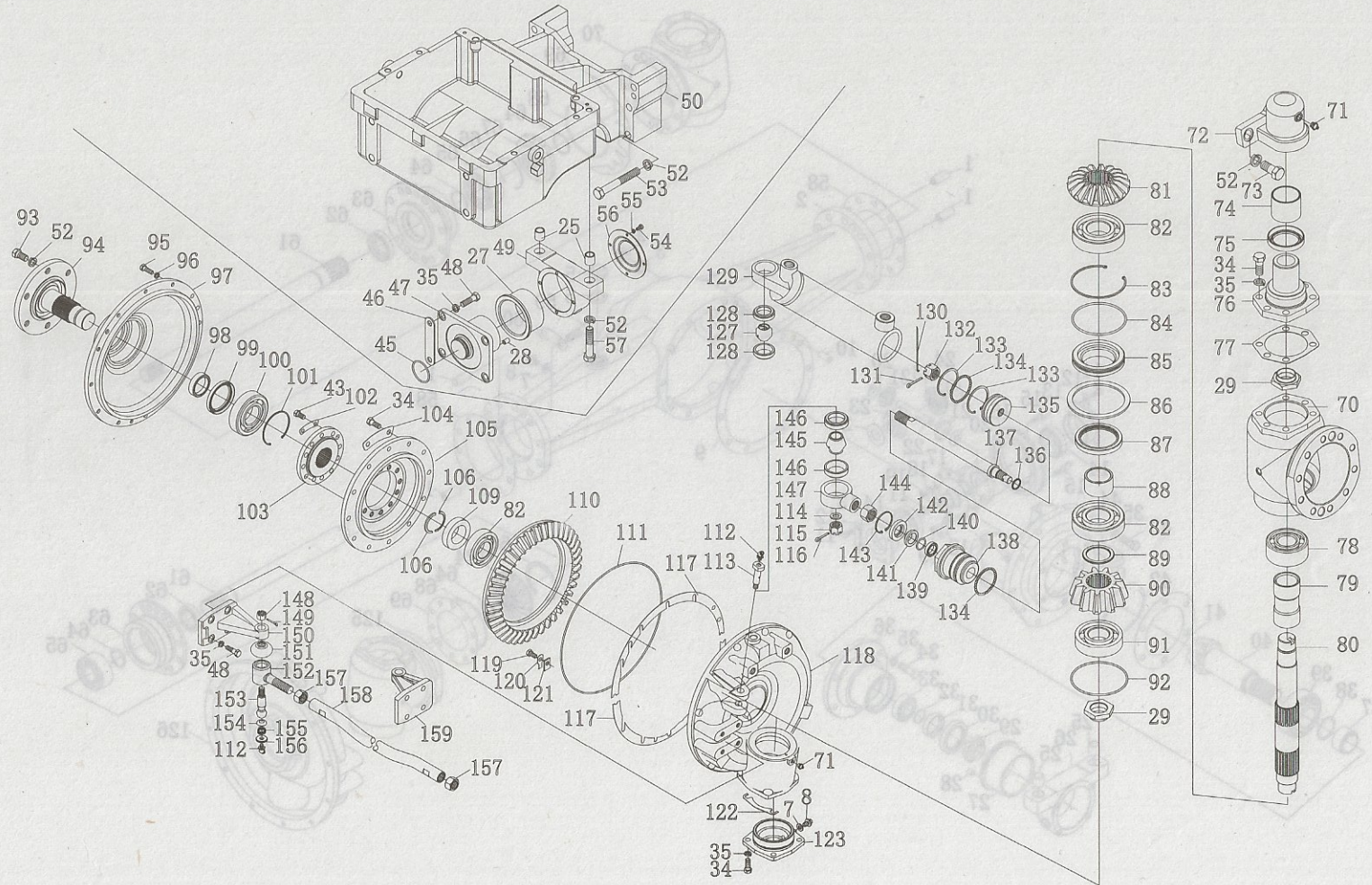
Note: Parts with the mark "*" are used for 65, 70, 72, 75P and 80P series tractor specially.
 备注: 标有 "*" 的用于 65、70、72、75P、80P 系列拖拉机。

31 前桥总成(用于两轮驱动液压转向拖拉机)

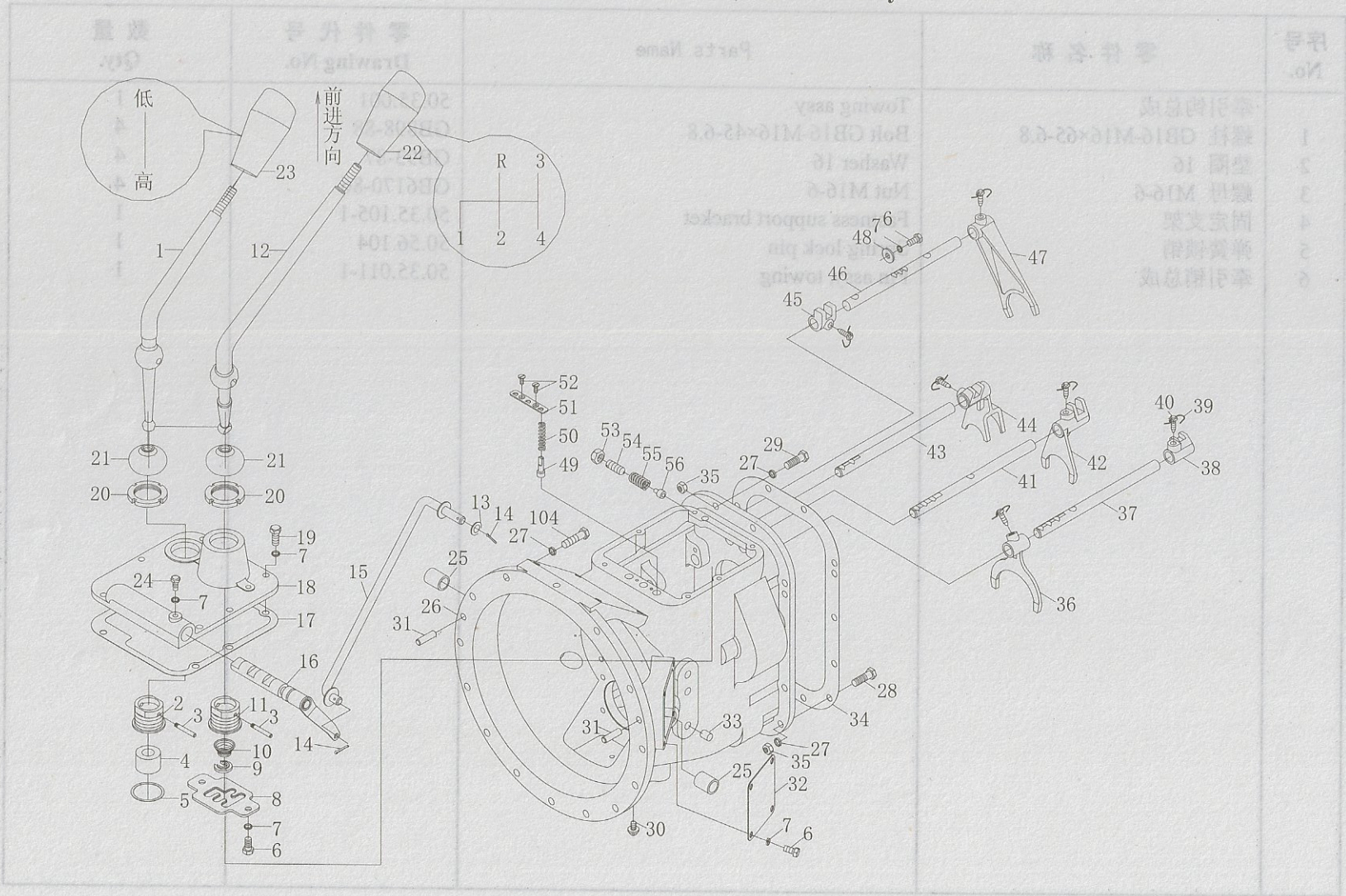
Front Axle Assy(Used for 2WD Tractor With Power Steering)



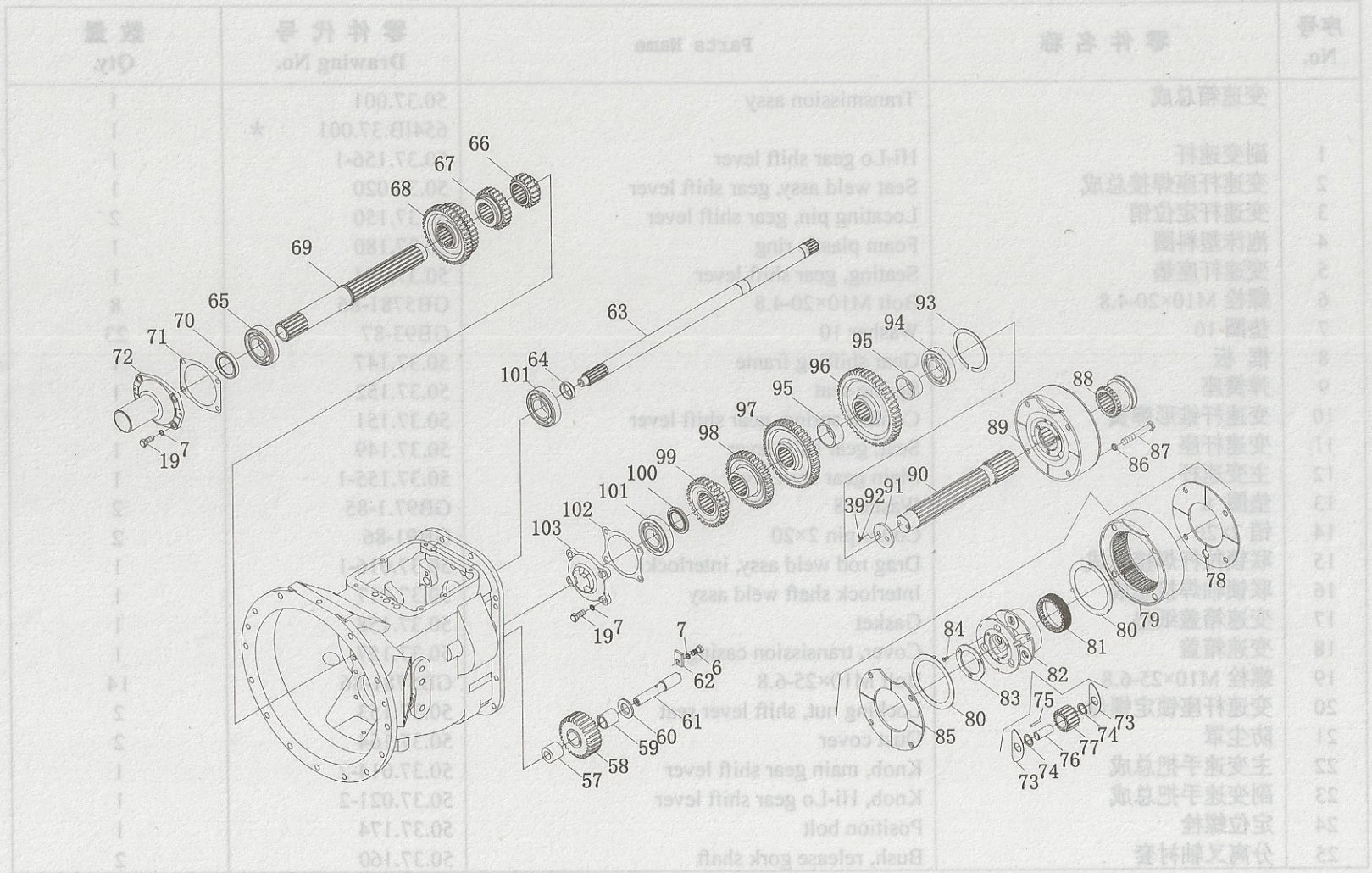
31前驱动桥总成 (用于四轮驱动拖拉机) (I)
 Front Driving Axle Assy(Used for Four-wheel-Driving Tractor) (I)



37 变速箱总成 Transmission Assy

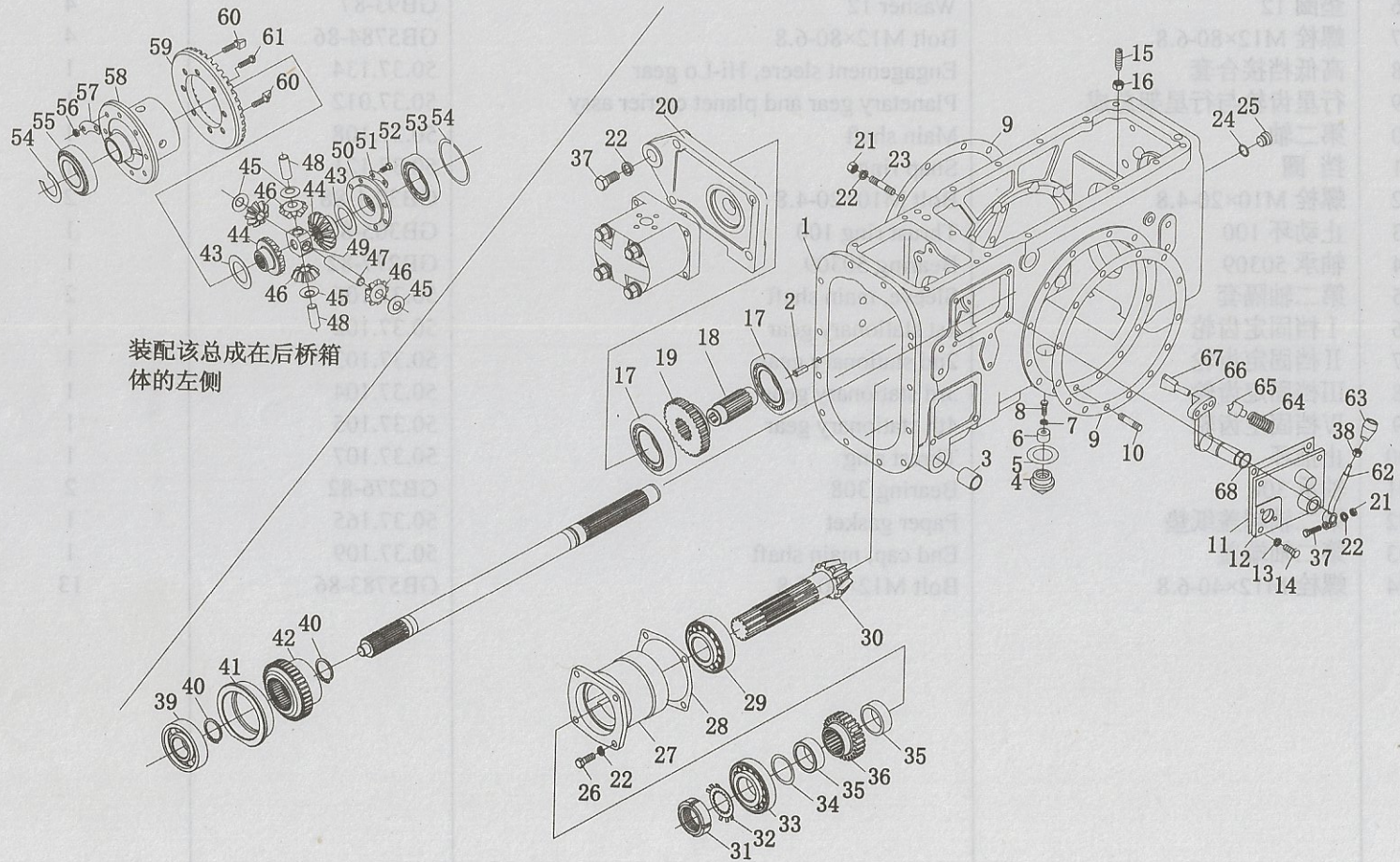


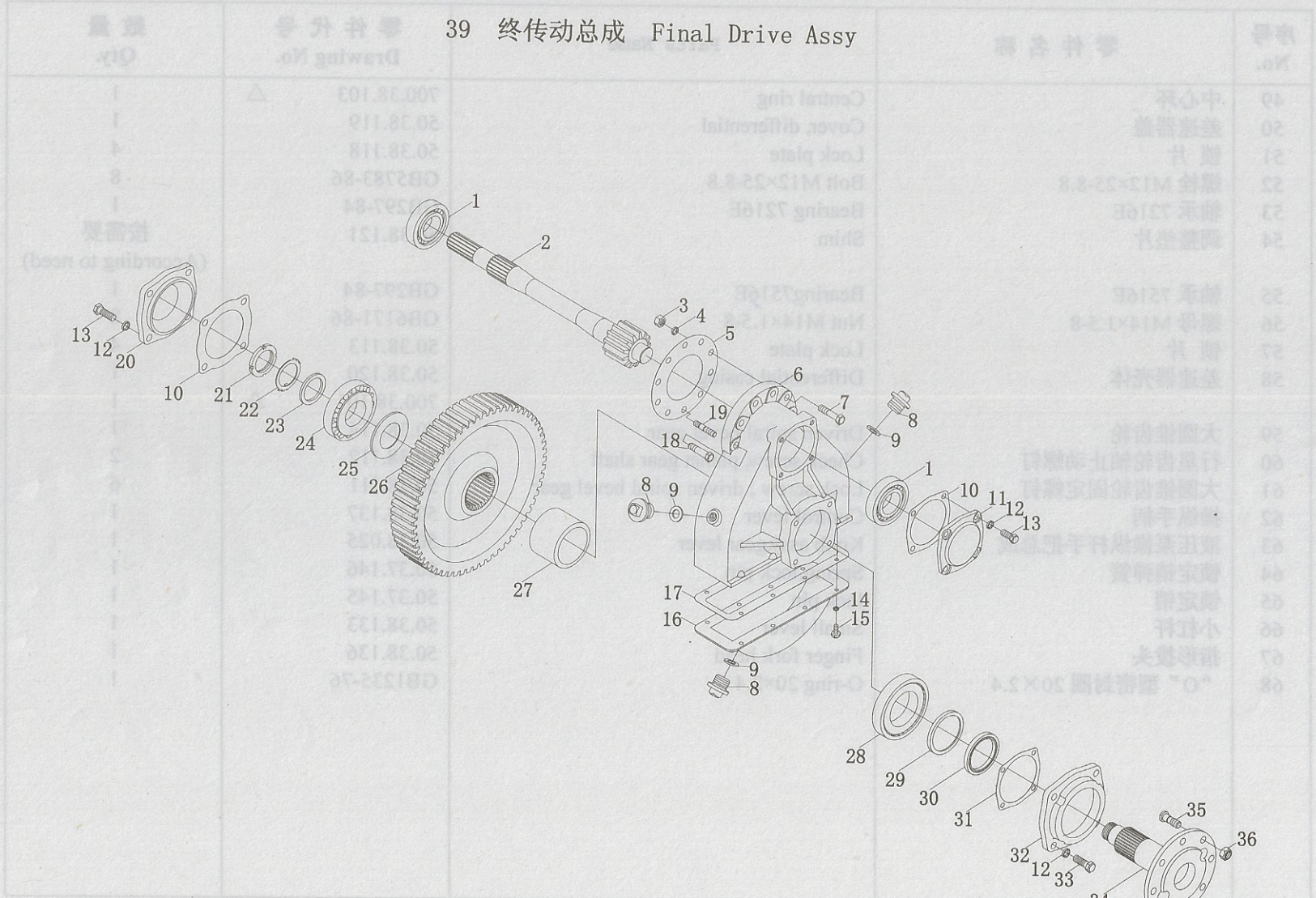
37 变速箱总成 Transmission Assy



Note: Parts with the mark "*" are used for 60, 65, 70, 72, 75P, 80P series tractor.
 备注: 标有 "*" 的用于 60, 65, 70, 72, 75P, 80P 系列拖拉机。

38 后桥总成 Rear Axle Assy

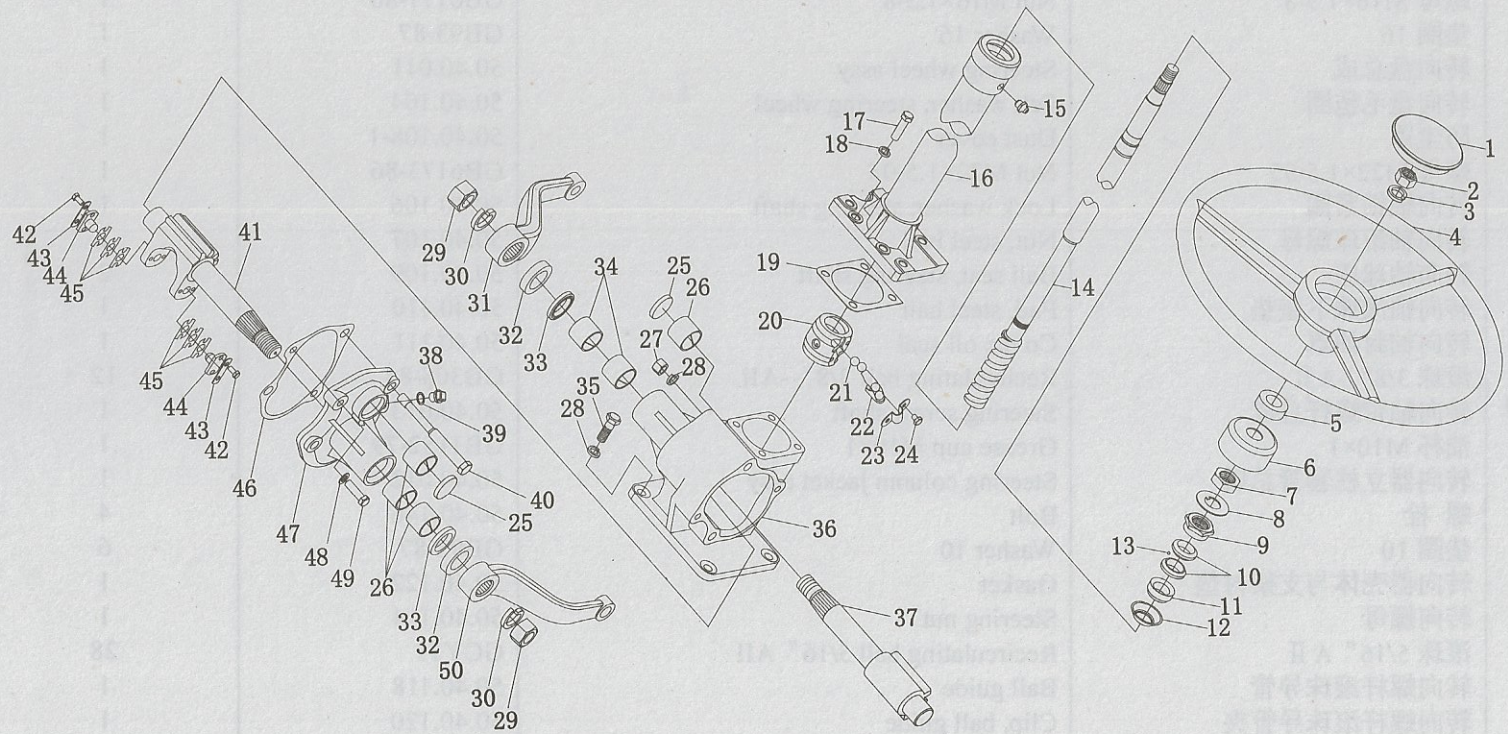




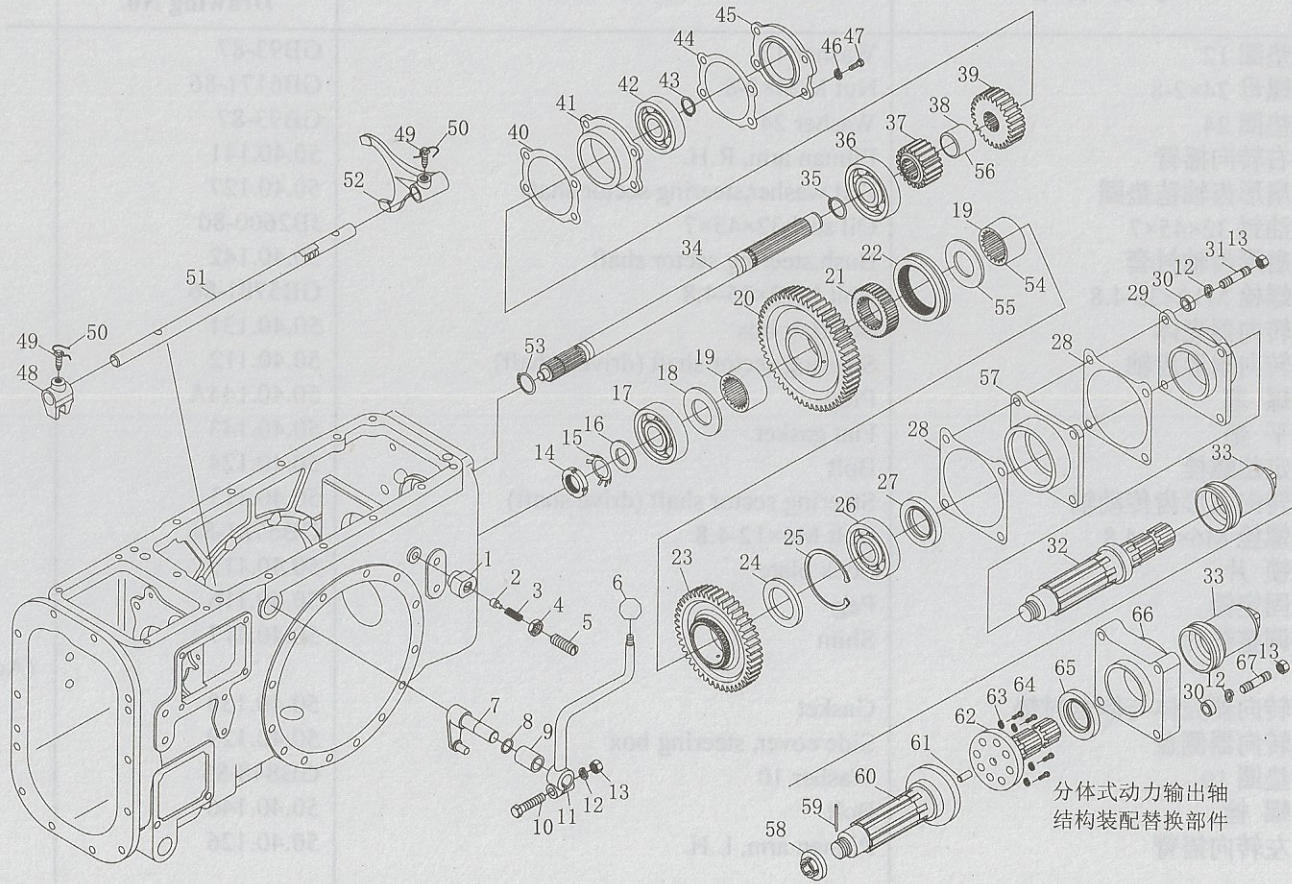
备注: 标注“△”用于 70-72, 75P, 80P 系列拖拉机. Note: Parts with the mark “△” are used for 70-72, 75P and 80P series tractor specially.

数量 Qty	零件代号 Drawing No.	零件名称	零件名称	零件代号 No.
1	700.38.103	Central ring	中心环	40
1	50.38.119	Cover differential	差速器盖	50
4	50.38.118	Lock plate	锁片	51
8	GB2783-86	Bolt M12×25-8.8	螺栓 M12×25-8.8	52
1	50.38.121	Bearing 7216E	轴承 7216E	53
		Shim	调整垫片	54
	GB297-84	Bearing 7216E	轴承 7216E	55
	GB6171-86	Nut M14×2-8	螺母 M14×2-8	56
	50.38.113	Lock plate	锁片	57
	50.38.113	Differential body	差速器壳体	58
1	50.38.113	Large end differential ring	大端差速器环	59
2	50.38.113	行星齿轮轴止动螺钉	行星齿轮轴止动螺钉	60
6	50.38.113	大端差速器固定螺母	大端差速器固定螺母	61
1	50.38.113	轴套	轴套	62
1	50.38.113	轴套	轴套	63
1	50.38.113	轴套	轴套	64
1	50.38.113	轴套	轴套	65
1	50.38.113	轴套	轴套	66
1	50.38.113	轴套	轴套	67
1	GB1232-76	O-ring 20	“O”型密封圈 20×2.4	68

40 转向器总成 Steering Gear Assy



41 动力输出总成 PTO Assy

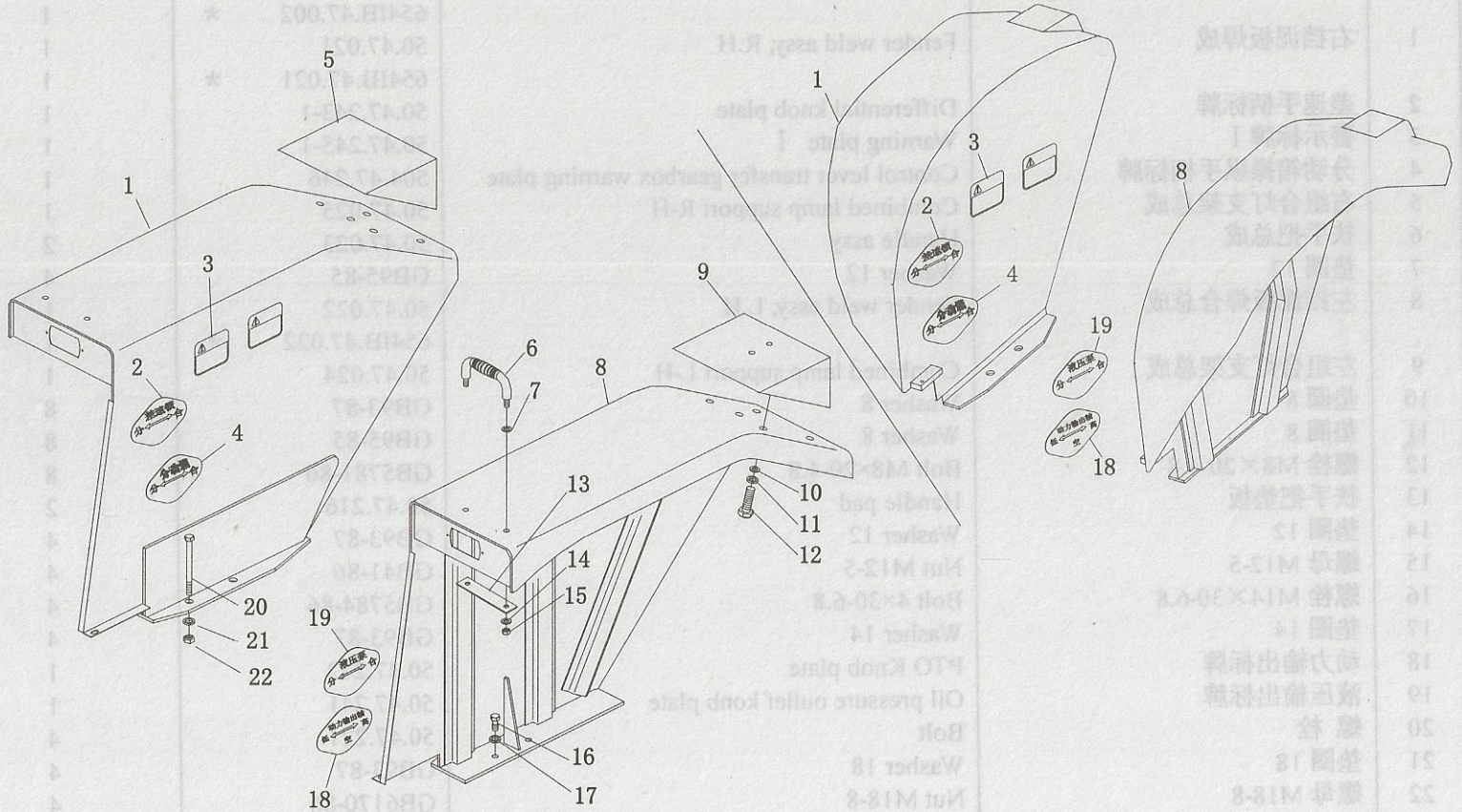


43 制动器总成 Brake Assy

数量 Qty	零件序号 Drawing No.	零件名称 Parts Name	零件名称 Parts Name	序号 No.
1	50.43.001	Right brake assy with differential lock	右制动器总成带差速锁总成	1
1	50.43.002	Left brake assy	左制动器总成	2
2	1B2500-80	Oil seal PD20×80×12	油封 PD20×80×12	3
2	1B2500-80	Pin A 12(m)×30	销 A12 (m)×30	4
1	1B2500-80	Hall shaft housing	凸轮轴壳	5
4	1B2500-80	Friction disk assy	摩擦片总成	6
4	1B2500-80	Friction disk	摩擦片	7
2	1B2500-80	Spring	弹簧	8
10	1B2500-80	Pin A12 (m)×30	销 A12 (m)×30	9
10	1B2500-80	Pin A12 (m)×30	销 A12 (m)×30	10
8	1B2500-80	Pin A12 (m)×30	销 A12 (m)×30	11
4	1B2500-80	Pin A12 (m)×30	销 A12 (m)×30	12
20	1B2500-80	Pin A12 (m)×30	销 A12 (m)×30	13
1	1B2500-80	Pin A12 (m)×30	销 A12 (m)×30	14
1	1B2500-80	Pin A12 (m)×30	销 A12 (m)×30	15
1	1B2500-80	Pin A12 (m)×30	销 A12 (m)×30	16
1	1B2500-80	Pin A12 (m)×30	销 A12 (m)×30	17
1	1B2500-80	Pin A12 (m)×30	销 A12 (m)×30	18
1	1B2500-80	Pin A12 (m)×30	销 A12 (m)×30	19
1	1B2500-80	Pin A12 (m)×30	销 A12 (m)×30	20
1	1B2500-80	Pin A12 (m)×30	销 A12 (m)×30	21
1	1B2500-80	Pin A12 (m)×30	销 A12 (m)×30	22
1	1B2500-80	Pin A12 (m)×30	销 A12 (m)×30	23
1	1B2500-80	Pin A12 (m)×30	销 A12 (m)×30	24
1	1B2500-80	Pin A12 (m)×30	销 A12 (m)×30	25
1	1B2500-80	Pin A12 (m)×30	销 A12 (m)×30	26
1	1B2500-80	Pin A12 (m)×30	销 A12 (m)×30	27
1	1B2500-80	Pin A12 (m)×30	销 A12 (m)×30	28
1	1B2500-80	Pin A12 (m)×30	销 A12 (m)×30	29
1	1B2500-80	Pin A12 (m)×30	销 A12 (m)×30	30
1	1B2500-80	Pin A12 (m)×30	销 A12 (m)×30	31
1	1B2500-80	Pin A12 (m)×30	销 A12 (m)×30	32
1	1B2500-80	Pin A12 (m)×30	销 A12 (m)×30	33
1	1B2500-80	Pin A12 (m)×30	销 A12 (m)×30	34
1	1B2500-80	Pin A12 (m)×30	销 A12 (m)×30	35
1	1B2500-80	Pin A12 (m)×30	销 A12 (m)×30	36
1	1B2500-80	Pin A12 (m)×30	销 A12 (m)×30	37
1	1B2500-80	Pin A12 (m)×30	销 A12 (m)×30	38
1	1B2500-80	Pin A12 (m)×30	销 A12 (m)×30	39
1	1B2500-80	Pin A12 (m)×30	销 A12 (m)×30	40
1	1B2500-80	Pin A12 (m)×30	销 A12 (m)×30	41
1	1B2500-80	Pin A12 (m)×30	销 A12 (m)×30	42
1	1B2500-80	Pin A12 (m)×30	销 A12 (m)×30	43
1	1B2500-80	Pin A12 (m)×30	销 A12 (m)×30	44
1	1B2500-80	Pin A12 (m)×30	销 A12 (m)×30	45
1	1B2500-80	Pin A12 (m)×30	销 A12 (m)×30	46
1	1B2500-80	Pin A12 (m)×30	销 A12 (m)×30	47
1	1B2500-80	Pin A12 (m)×30	销 A12 (m)×30	48
1	1B2500-80	Pin A12 (m)×30	销 A12 (m)×30	49
1	1B2500-80	Pin A12 (m)×30	销 A12 (m)×30	50
1	1B2500-80	Pin A12 (m)×30	销 A12 (m)×30	51
1	1B2500-80	Pin A12 (m)×30	销 A12 (m)×30	52
1	1B2500-80	Pin A12 (m)×30	销 A12 (m)×30	53
1	1B2500-80	Pin A12 (m)×30	销 A12 (m)×30	54
1	1B2500-80	Pin A12 (m)×30	销 A12 (m)×30	55
1	1B2500-80	Pin A12 (m)×30	销 A12 (m)×30	56
1	1B2500-80	Pin A12 (m)×30	销 A12 (m)×30	57
1	1B2500-80	Pin A12 (m)×30	销 A12 (m)×30	58
1	1B2500-80	Pin A12 (m)×30	销 A12 (m)×30	59
1	1B2500-80	Pin A12 (m)×30	销 A12 (m)×30	60
1	1B2500-80	Pin A12 (m)×30	销 A12 (m)×30	61
1	1B2500-80	Pin A12 (m)×30	销 A12 (m)×30	62
1	1B2500-80	Pin A12 (m)×30	销 A12 (m)×30	63
1	1B2500-80	Pin A12 (m)×30	销 A12 (m)×30	64
1	1B2500-80	Pin A12 (m)×30	销 A12 (m)×30	65
1	1B2500-80	Pin A12 (m)×30	销 A12 (m)×30	66
1	1B2500-80	Pin A12 (m)×30	销 A12 (m)×30	67
1	1B2500-80	Pin A12 (m)×30	销 A12 (m)×30	68
1	1B2500-80	Pin A12 (m)×30	销 A12 (m)×30	69
1	1B2500-80	Pin A12 (m)×30	销 A12 (m)×30	70
1	1B2500-80	Pin A12 (m)×30	销 A12 (m)×30	71
1	1B2500-80	Pin A12 (m)×30	销 A12 (m)×30	72
1	1B2500-80	Pin A12 (m)×30	销 A12 (m)×30	73
1	1B2500-80	Pin A12 (m)×30	销 A12 (m)×30	74
1	1B2500-80	Pin A12 (m)×30	销 A12 (m)×30	75
1	1B2500-80	Pin A12 (m)×30	销 A12 (m)×30	76
1	1B2500-80	Pin A12 (m)×30	销 A12 (m)×30	77
1	1B2500-80	Pin A12 (m)×30	销 A12 (m)×30	78
1	1B2500-80	Pin A12 (m)×30	销 A12 (m)×30	79
1	1B2500-80	Pin A12 (m)×30	销 A12 (m)×30	80
1	1B2500-80	Pin A12 (m)×30	销 A12 (m)×30	81
1	1B2500-80	Pin A12 (m)×30	销 A12 (m)×30	82
1	1B2500-80	Pin A12 (m)×30	销 A12 (m)×30	83

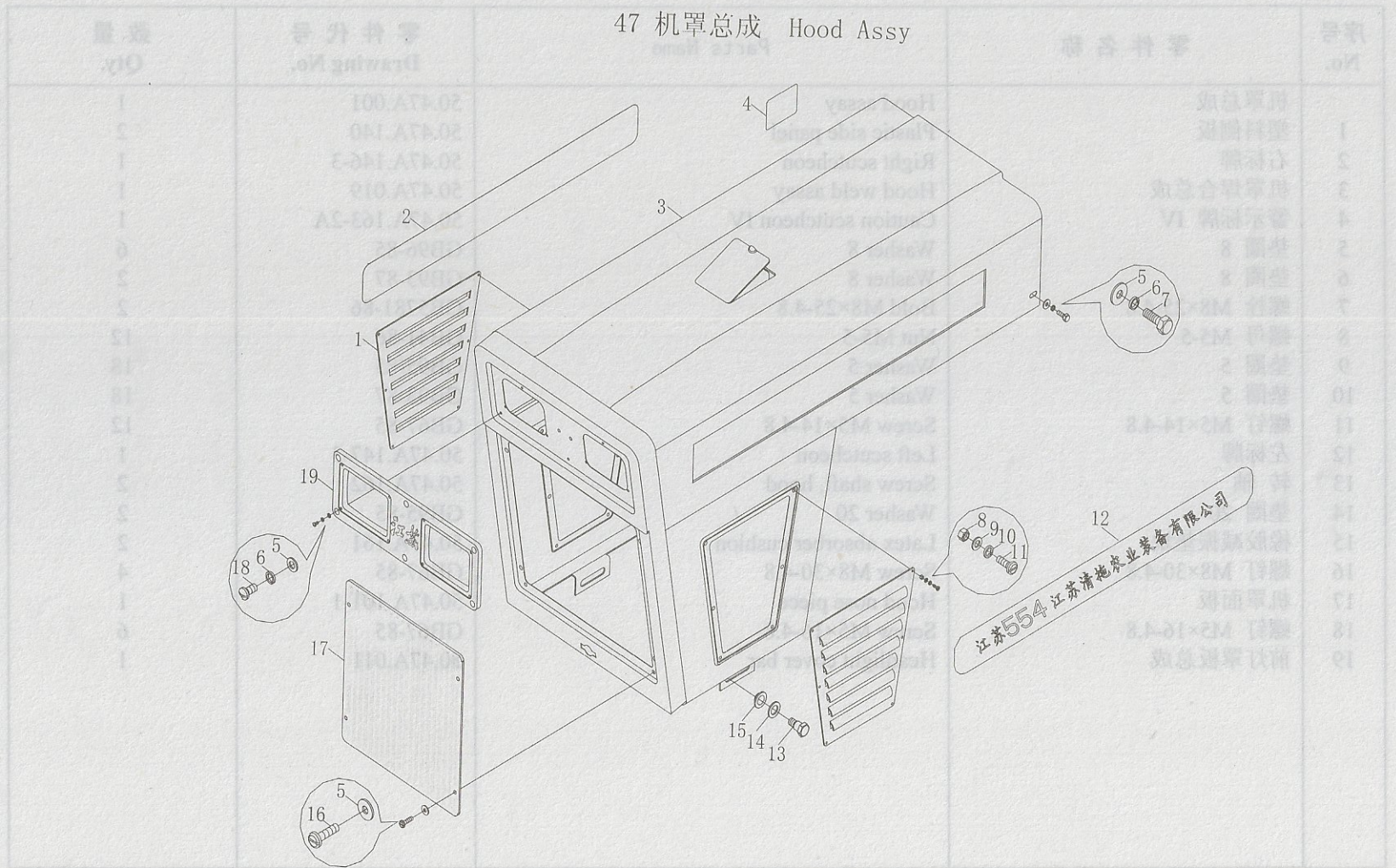
47 挡泥板总成 Fender Assy

数量 Qty	零件代号 Drawing No.	零件名称 Parts Name	零件名称 Parts Name	零件代号 Drawing No.
1	50.47.002	Fender Assy	挡泥板总成	
1	62.41B.47.003 *	Fender weld Assy, R-H	右挡泥板焊成	1
1	50.47.021	Different knob plate	不同手扳按钮牌	2
1	50.47.021 *	Different knob plate	不同手扳按钮牌	3
1	50.47.021 *	Different knob plate	不同手扳按钮牌	4
1	50.47.021 *	Different knob plate	不同手扳按钮牌	5
1	50.47.021 *	Different knob plate	不同手扳按钮牌	6
1	50.47.021 *	Different knob plate	不同手扳按钮牌	7
1	50.47.021 *	Different knob plate	不同手扳按钮牌	8
1	50.47.021 *	Different knob plate	不同手扳按钮牌	9
1	50.47.021 *	Different knob plate	不同手扳按钮牌	10
1	50.47.021 *	Different knob plate	不同手扳按钮牌	11
1	50.47.021 *	Different knob plate	不同手扳按钮牌	12
1	50.47.021 *	Different knob plate	不同手扳按钮牌	13
1	50.47.021 *	Different knob plate	不同手扳按钮牌	14
1	50.47.021 *	Different knob plate	不同手扳按钮牌	15
1	50.47.021 *	Different knob plate	不同手扳按钮牌	16
1	50.47.021 *	Different knob plate	不同手扳按钮牌	17
1	50.47.021 *	Different knob plate	不同手扳按钮牌	18
1	50.47.021 *	Different knob plate	不同手扳按钮牌	19
1	50.47.021 *	Different knob plate	不同手扳按钮牌	20
1	50.47.021 *	Different knob plate	不同手扳按钮牌	21
1	50.47.021 *	Different knob plate	不同手扳按钮牌	22



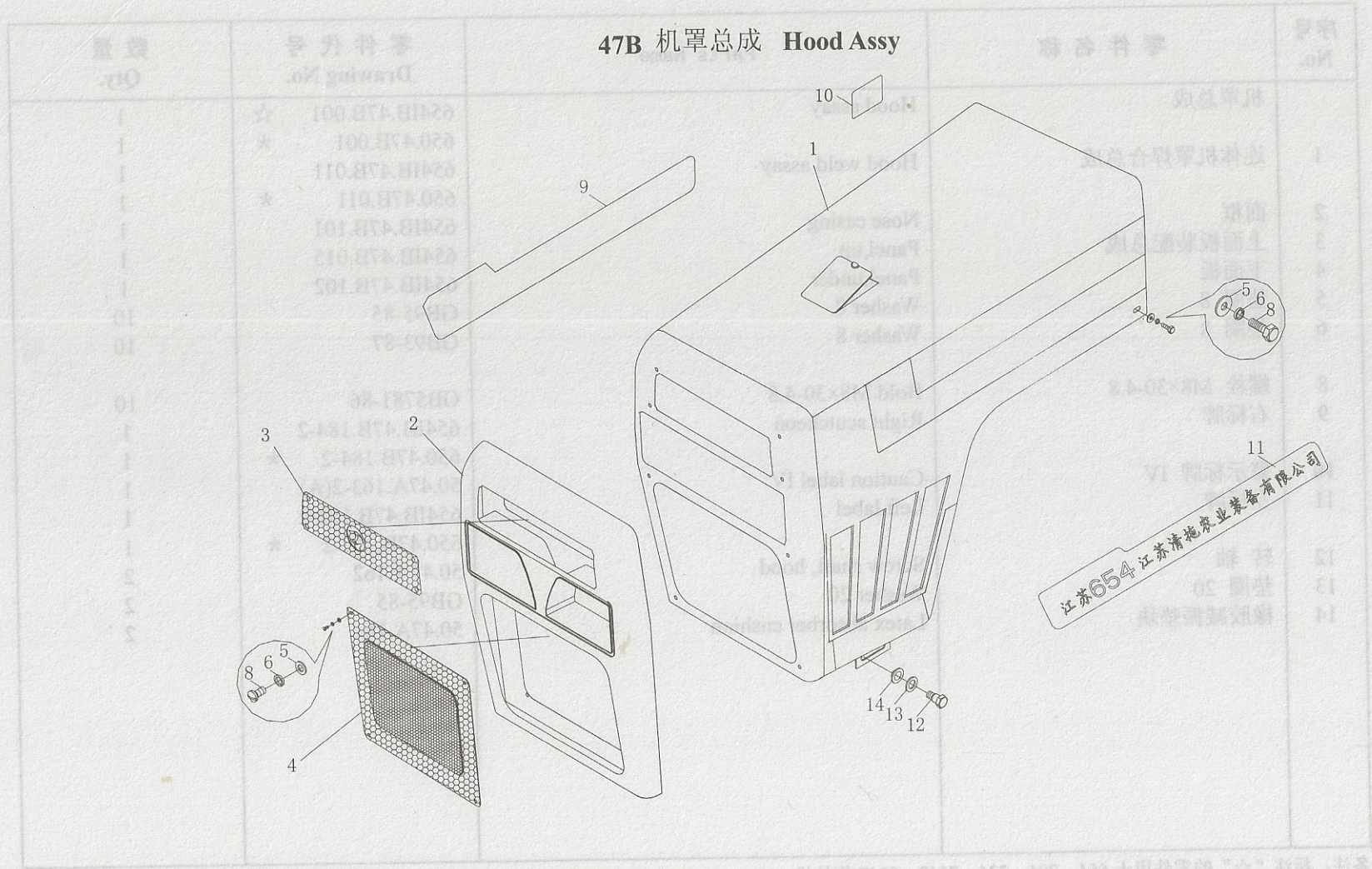
备注: 标有“*”的用于 65, 70, 72, 75P, 80P 拖拉机。Note: Parts with the mark “*” are used for 65, 70, 72, 75P and 80P tractor.

47 机罩总成 Hood Assy



数量 Qty	零件代号 Drawing No.	零件名称	序号 No.
1	3047A.001	机罩总成	1
2	3047A.1A0	塑料面板	2
1	3047A.1A0-3	心板	3
1	3047A.019	机罩组合总成	3
1	103-2A	塑料面板 IV	4
6		垫圈 8	5
2		垫圈 8	6
2		螺母 M8	7
2		螺母 M8	8
12		垫圈 8	9
18		垫圈 8	10
18		螺母 M8	11
12		螺母 M8	12
1		六角螺母	13
2		垫圈 8	14
2		螺母 M8	15
2		螺母 M8	16
4		螺母 M8	17
1		螺母 M8	18
1		螺母 M8	19

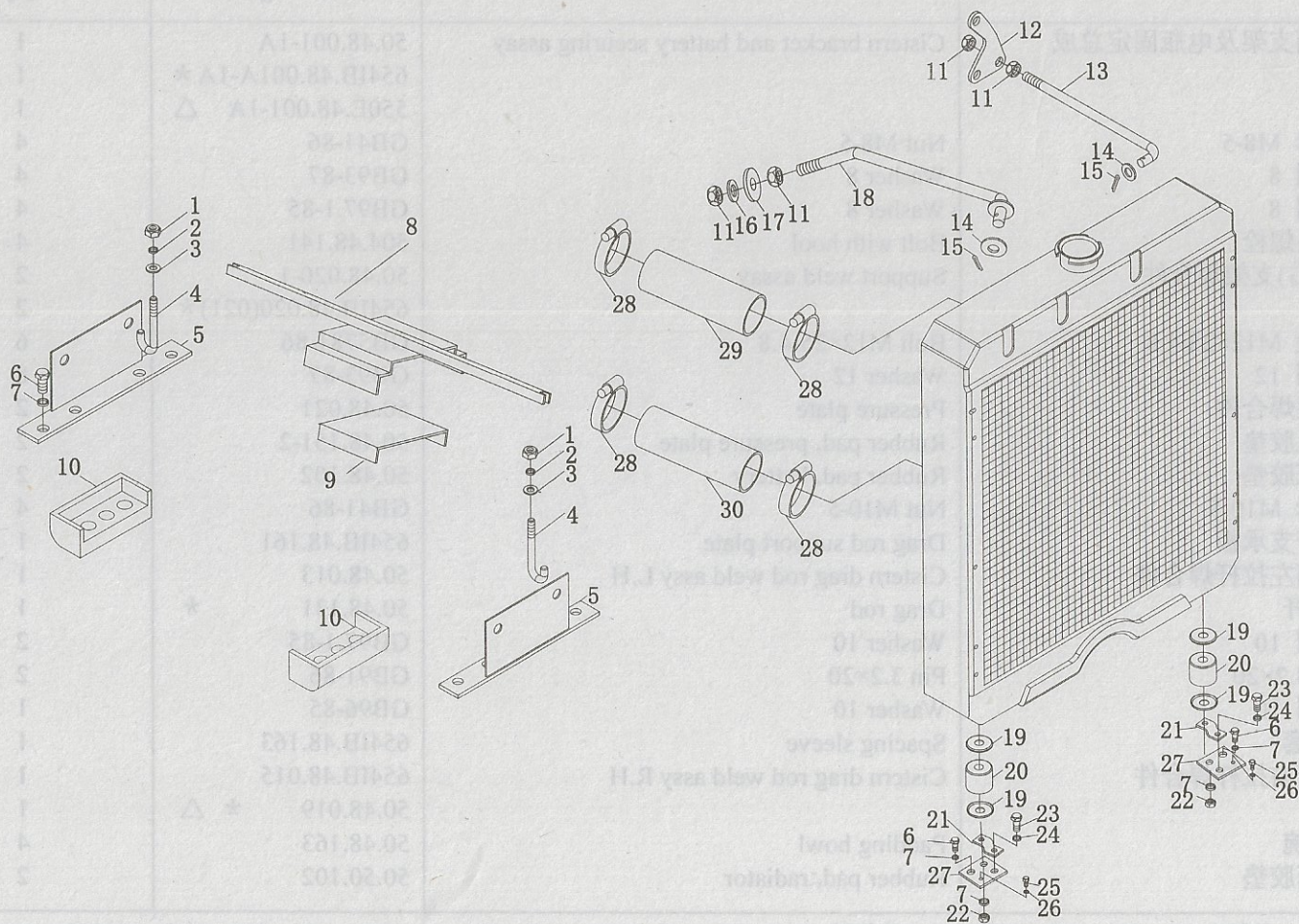
47B 机罩总成 Hood Assy



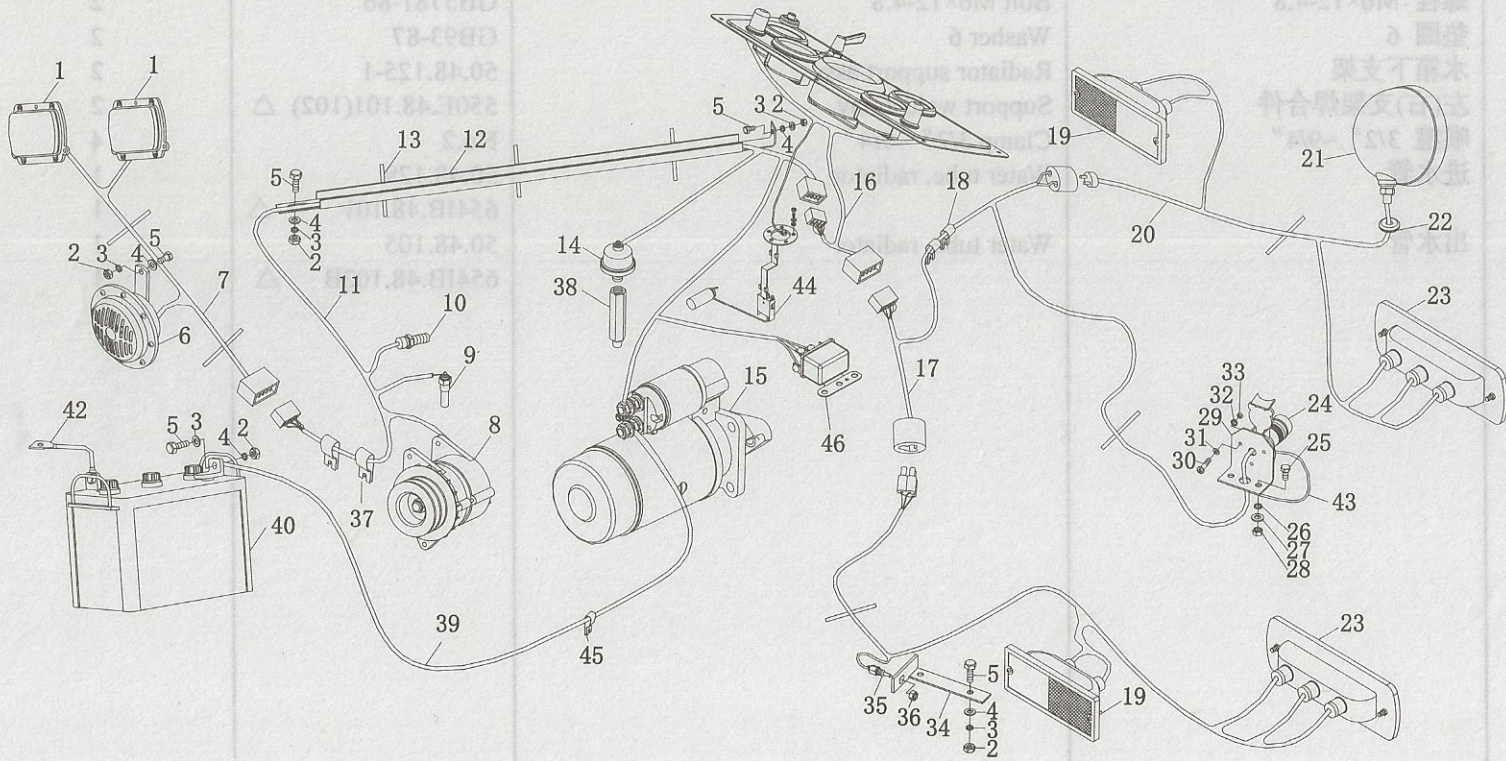
备注：标有“☆”的零件用于654、704、754、804P和804P tractor。Note: Parts with the mark “☆” are used for 654, 704, 754, 804P and 804P tractor.
 备注：标有“*”的零件用于650、700、750P、800P和800P tractor。Note: Parts with the mark “*” are used for 650, 700, 750P, 800P and 800P tractor.

48 水箱支架及电瓶固定总成

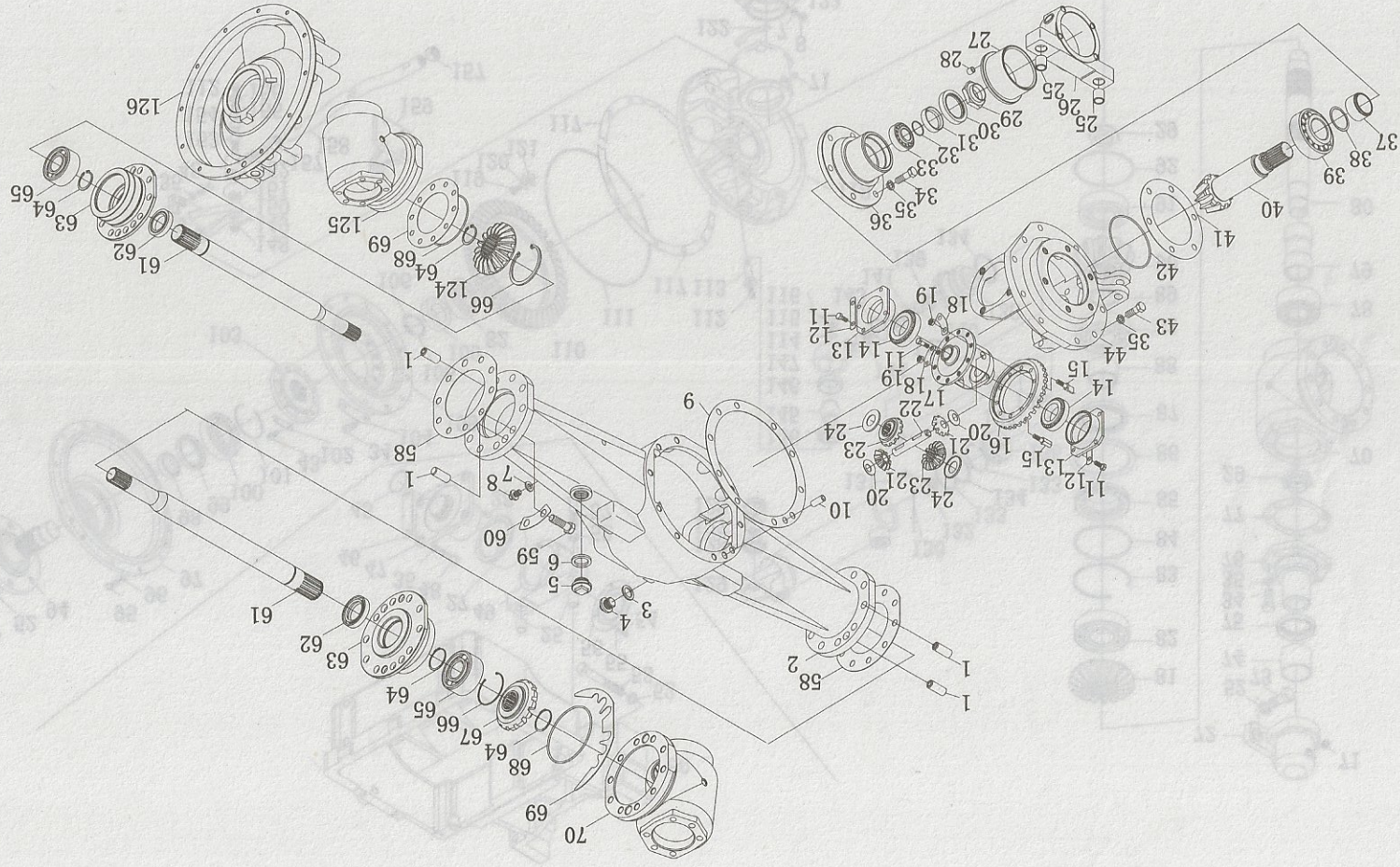
Cistern Bracket and Battery Securing Assy



48J 电器设备及仪表装配总成(I)
Electrical System and Instrument Panel Assy (I)

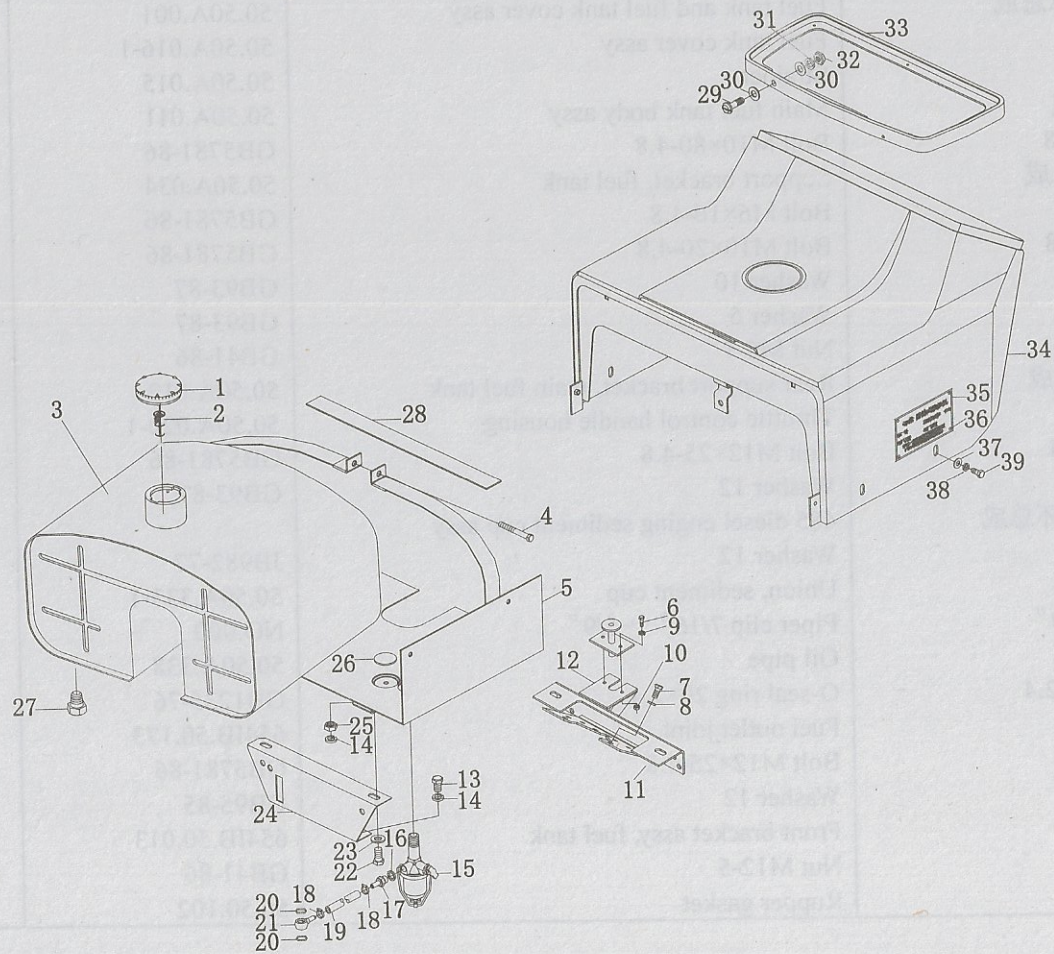


备注：标注“△”的用于250、650、700、720、750P、800P拖拉机。
Note: Parts with the mark "△" are used for 250, 650, 700, 720, 750P and 800P tractor.



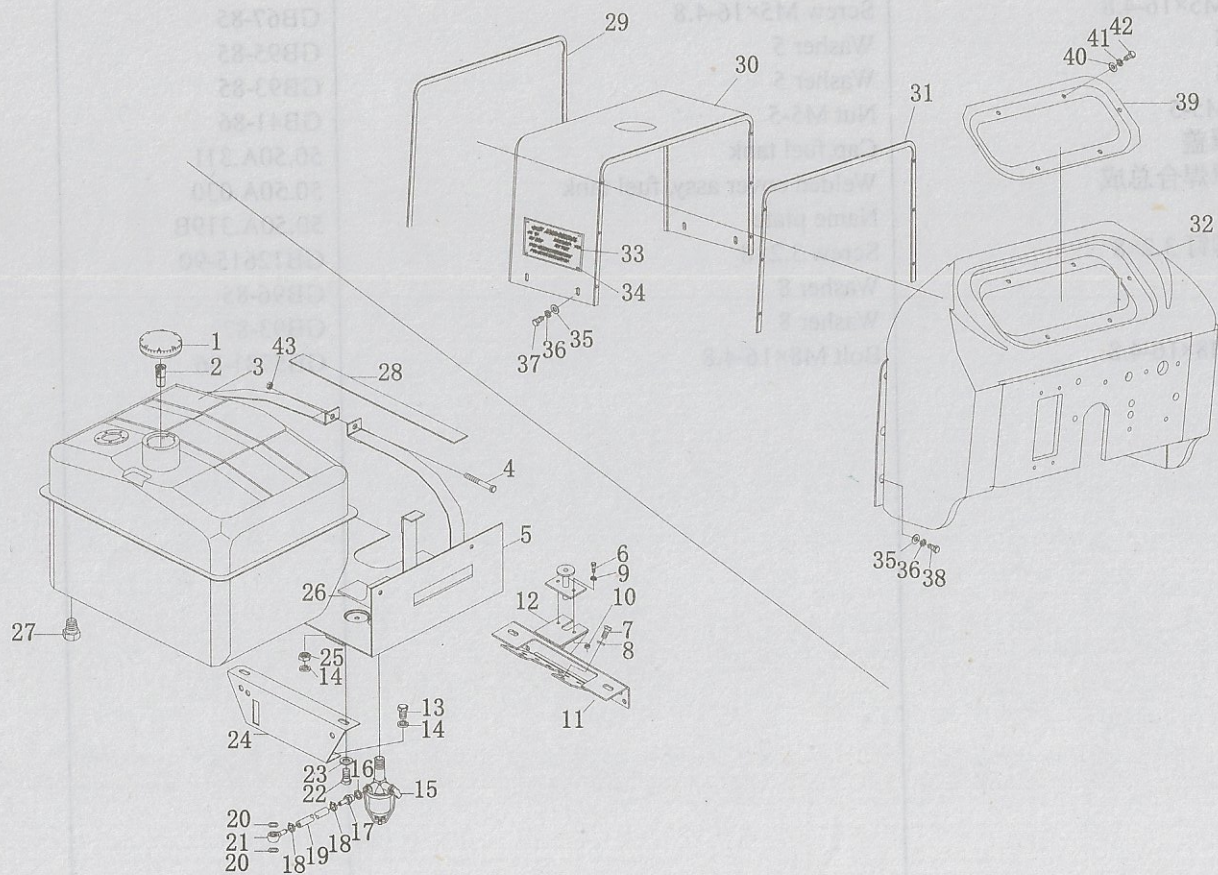
31前驱动桥总成 (用于四轮驱动拖拉机) (II)
 Front Driving Axle Assy (Used for Four-wheel-Driving Tractor) (II)

50A 主油箱及油箱罩总成
Fuel Tank and Fuel Tank Cover Assy

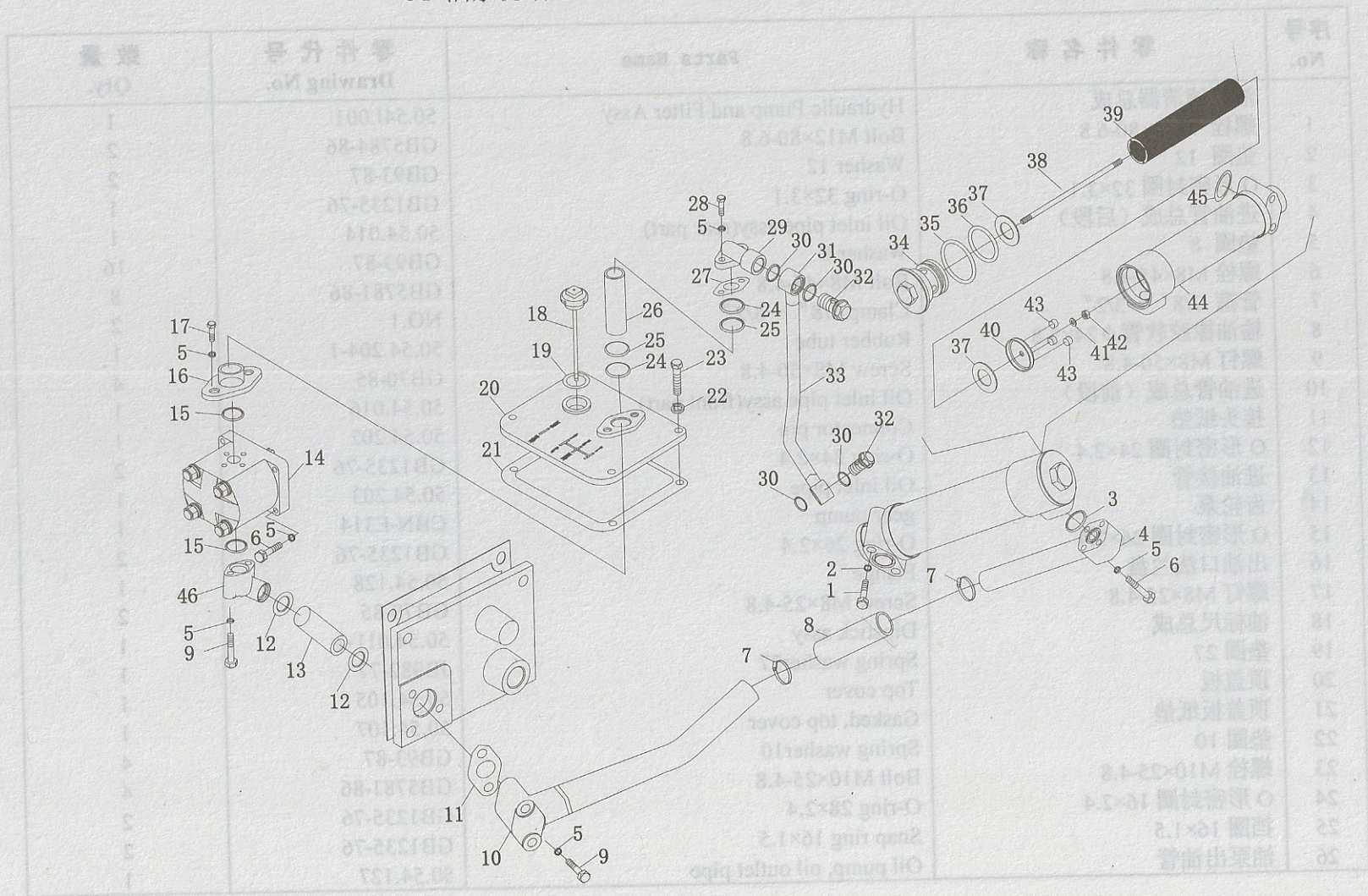


50B 主油箱及油箱罩总成

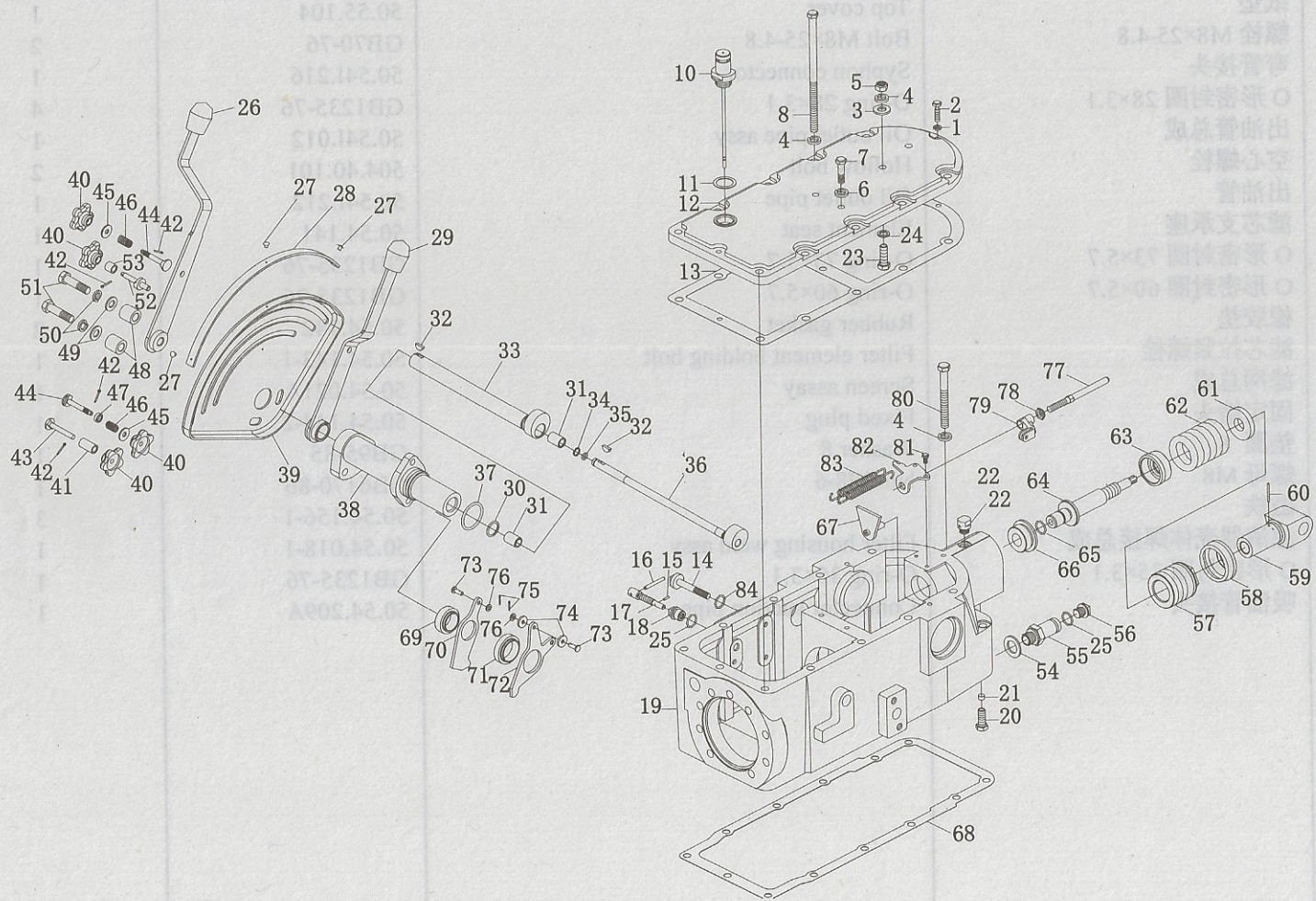
Fuel Tank and Fuel Tank Cover Assy



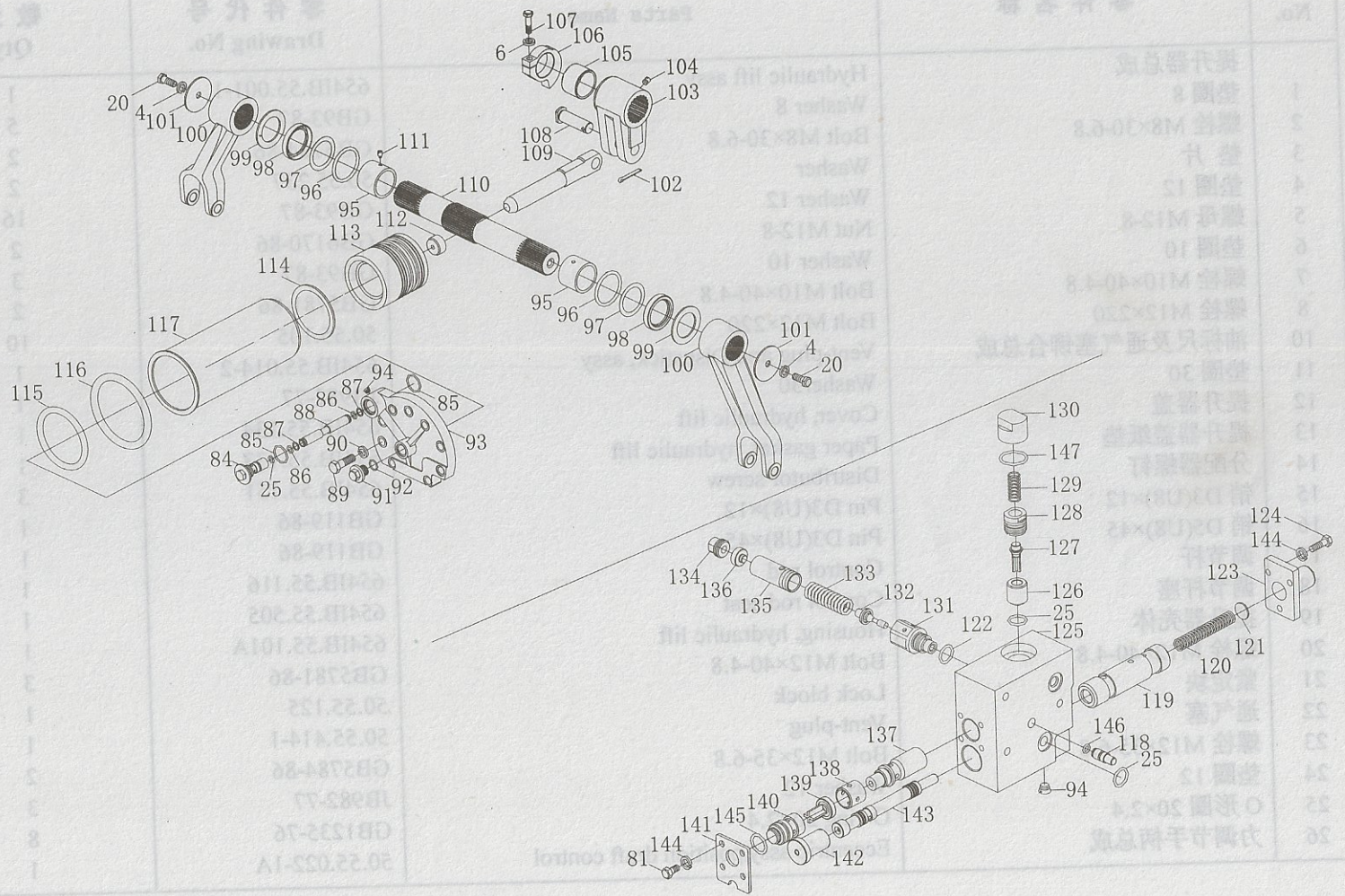
54 油泵滤清器总成 Hydraulic Pump and Filter Assy



55 提升器总成 Hydraulic Lift Assy



55 提升器总成 Hydraulic Lift Assy



56 悬挂机构总成 Suspension Linkage Assy

